

---

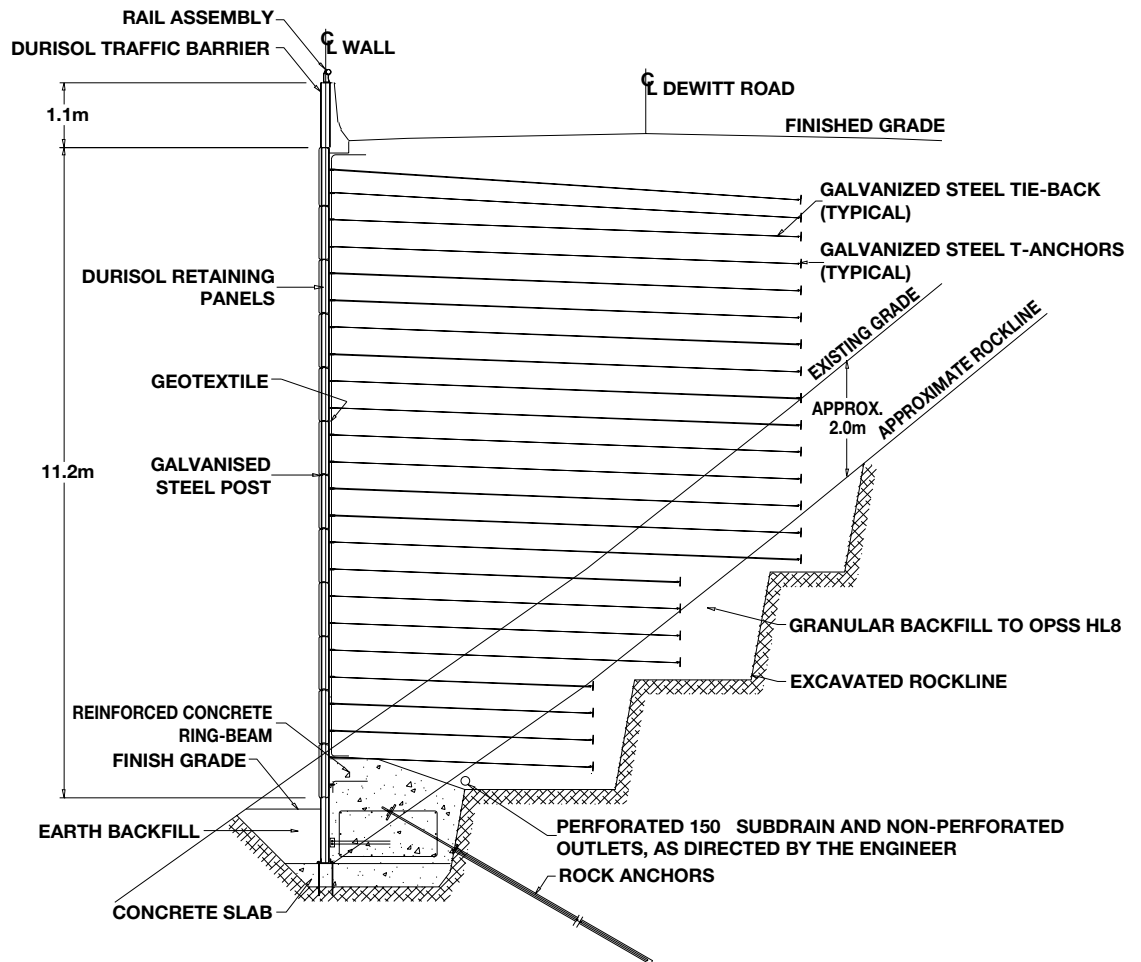
**DURISOL  
ANCHORED  
RETAINING WALL  
SYSTEM  
(DARWS)**

***Durisol***

# DURISOL® ANCHORED RETAINING WALL SYSTEM (DARWS)

## Project - DeWitt and Ridge Roads Intersection, Stoney Creek, Ontario

- Located on the slope of the Niagara Escarpment
- 11 meter wall heights with Durisol's Traffic Barriers at top
- 4 meter wall heights with Traffic Barriers at base
- Sound absorptive, textured Durisol wall panels
- Rock anchors secure bottom of wall into rock
- Intricate 3-D geometry constructed in record time



**TYPICAL SECTION THRU WALL**

# DURISOL® ANCHORED RETAINING WALL SYSTEM (DARWS)

Project - Dewitt and Ridge Roads Intersection, Stoney Creek, Ontario



General view



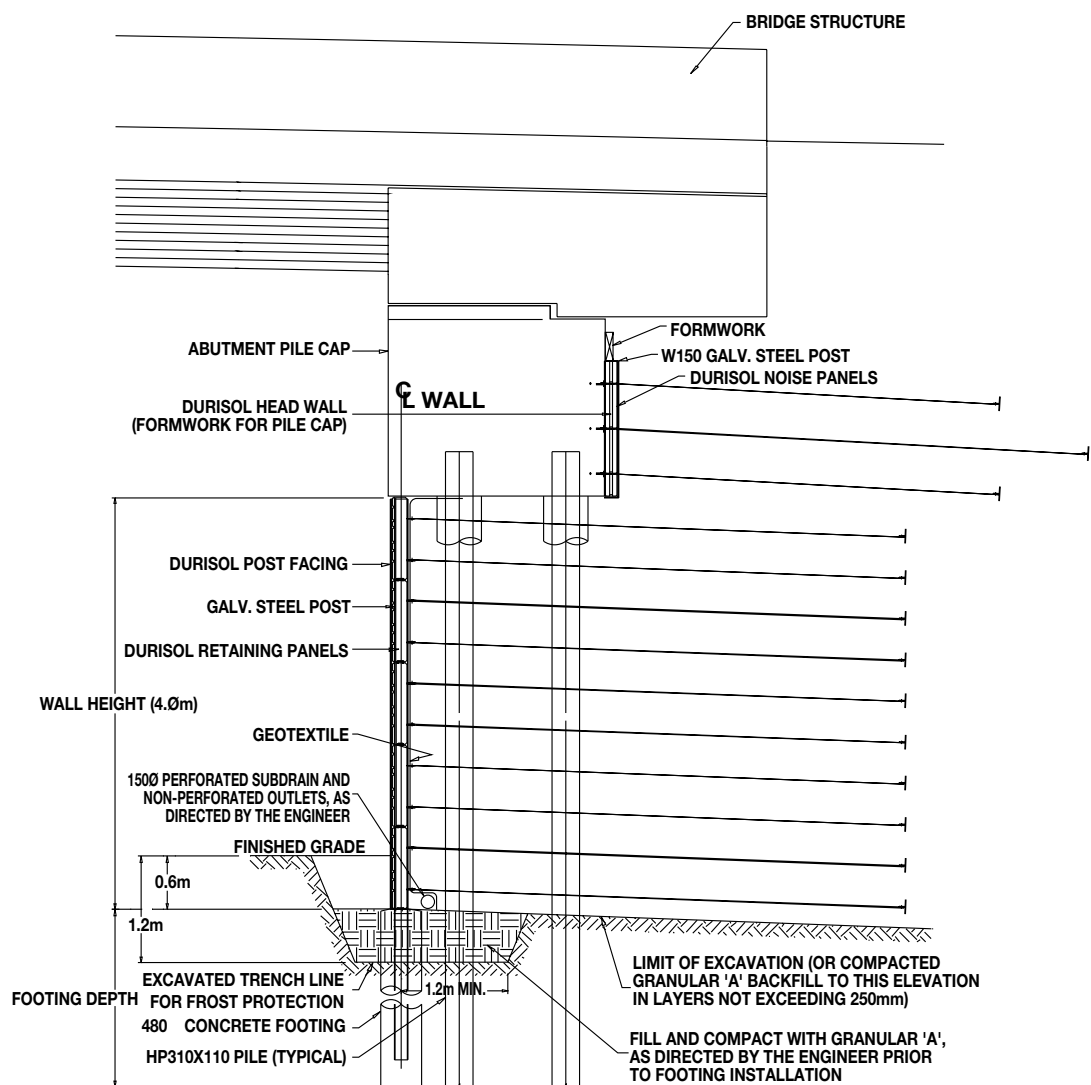
Side View

**Durisol**

# DURISOL® ANCHORED RETAINING WALL SYSTEM (DARWS)

## Project - Mud Street Overpass Bridge Abutments, Hamilton, Ontario

- Located on the Lincoln M. Alexander Expressway
- False bridge abutments, Bridge supported on vertical piles
- Pile cap tied back for horizontal loads
- Rapid construction sequence; first guide posts, then all panels, followed by backfill
- Textured and coloured Durisol facing panels



**TYPICAL SECTION THRU ABUTMENT**

# DURISOL® ANCHORED RETAINING WALL SYSTEM (DARWS)

Project - Mud Street Overpass Bridge Abutments, Hamilton, Ontario



General view

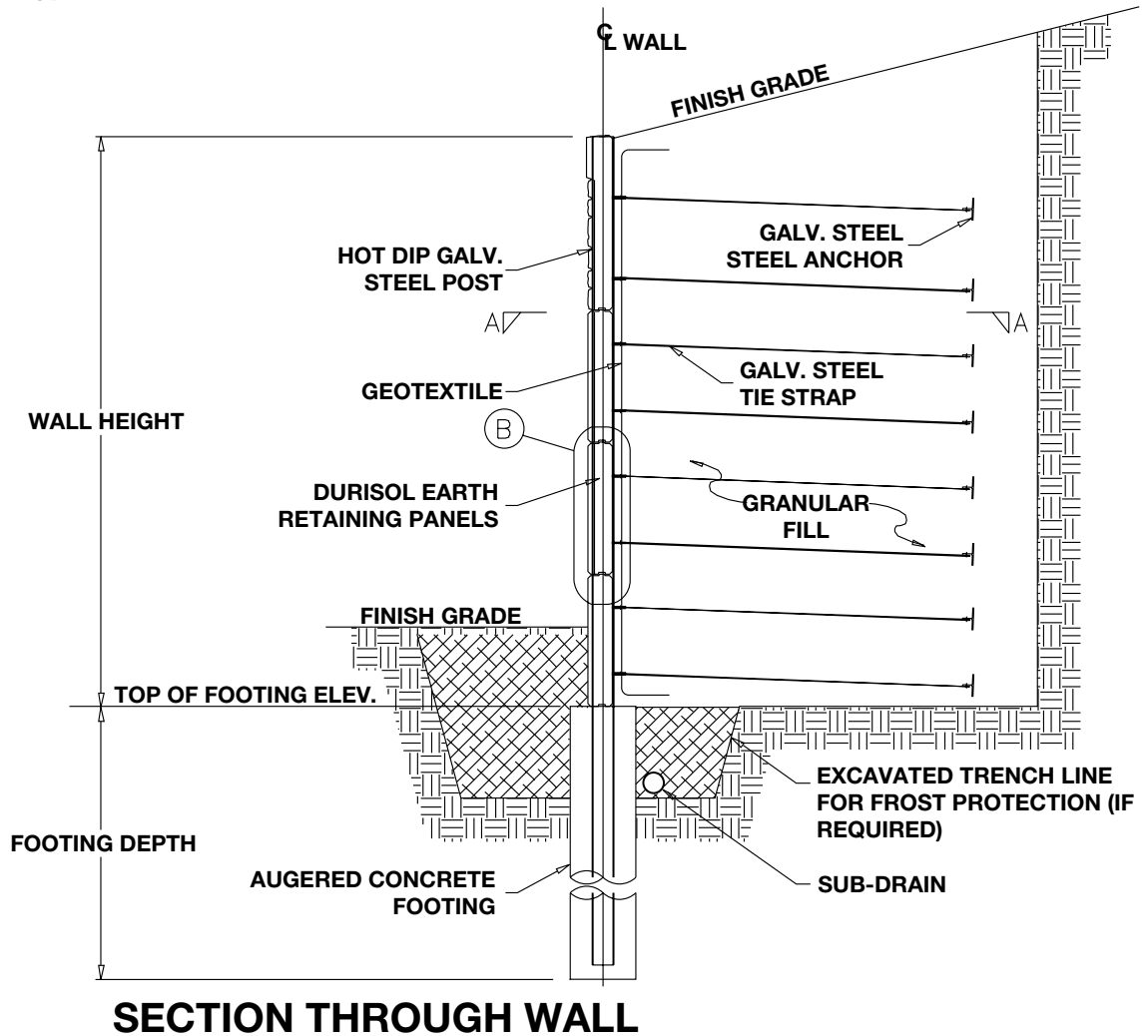


Strap and Anchor layout

**Durisol**

# DURISOL® ANCHORED RETAINING WALL SYSTEM (DARWS)

## Typical Details

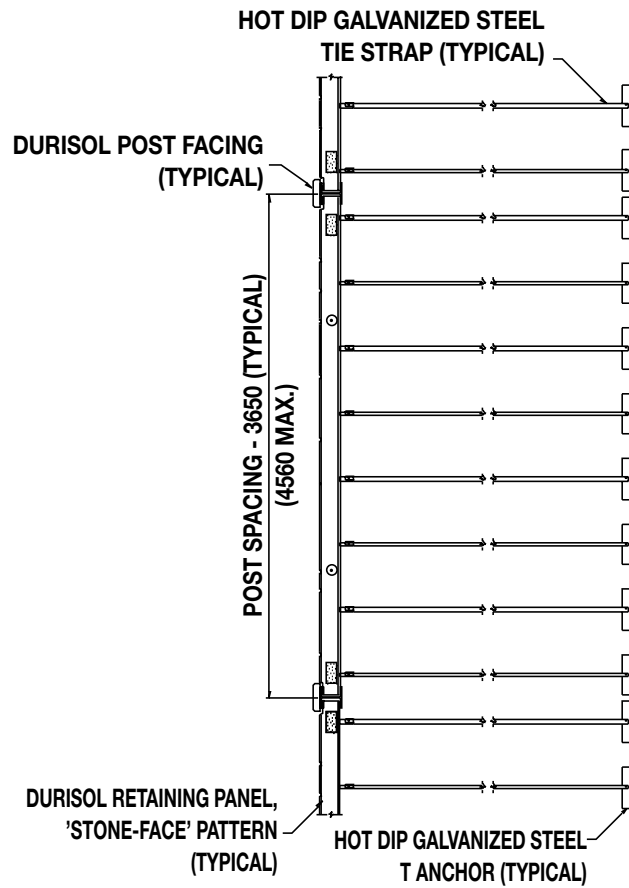


- Mechanically Stabilized Earth System
- All ties and anchors positively connected
- Textured precast concrete face panels
- Excellent for wall heights up to 15m
- Guide posts, at max. 4.56m spacing, simplify and speed up construction
- Fully compatible with Durisol's Noise and Traffic Barrier Systems
- Engineered for 75 year service life
- On MTO Designated Sources of Materials List - DSM #9.70.56

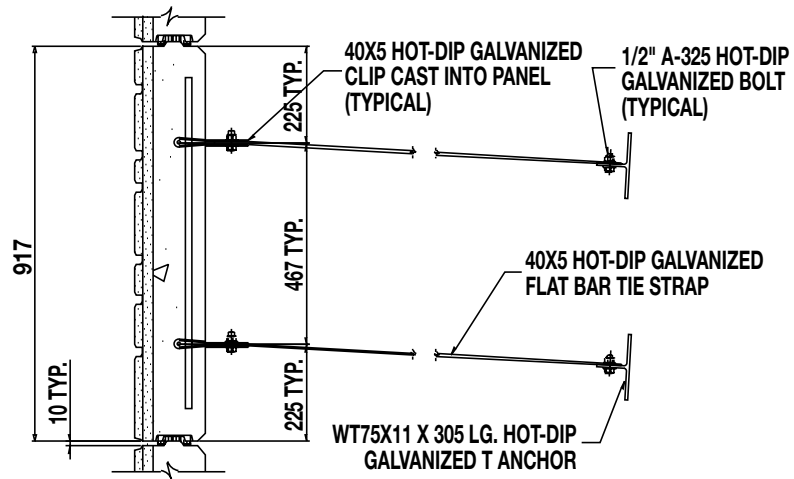
**Durisol**

# DURISOL® ANCHORED RETAINING WALL SYSTEM (DARWS)

## Typical Details



**PLAN SECTION A-A STRAP AND ANCHOR LAYOUT**



**SECTION "B" PANEL STRAP ANCHOR CONNECTION**



---

## Advantages of Durisol® Anchored Retaining Wall System

- Installation of retaining wall post and panels independent of backfill operation
- All Durisol components - posts, panels, post facings, traffic barriers are interchangeable
- Sound absorptive, textured and coloured exposed faces
- Maintenance free construction, engineered for 75 year service life
- High Quality, Premanufactured components
- Cost effective
- Fully engineered by licenced professional engineers

The Durisol logo is rendered in a bold, green, cursive script font. The letter 'D' is significantly larger and more stylized than the rest of the word, with a thick stroke and a rounded top. The 'urisol' part follows in a similar cursive style but with a more consistent stroke weight. A small registered trademark symbol (®) is located at the end of the word.

DURISOL INC.  
67 Frid Street, Hamilton, Ontario  
Canada L8P 4M3  
Tel: (905) 521-0999 Fax: (905) 521-8658  
www.durisol.com e-mail: durisol@durisol.com